

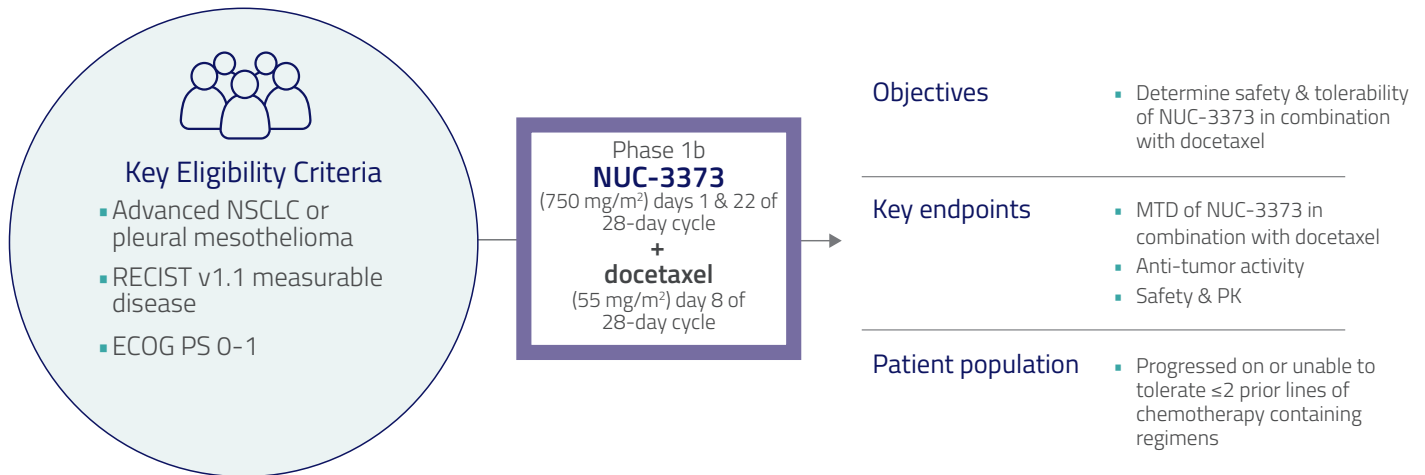


ONGOING

NUTIDE:303 - MODULE 2/NUC-3373 + docetaxel

SOLID TUMOR - MODULAR PHASE 1b/2 STUDY

Designed to assess the safety of NUC-3373 in combination with docetaxel



NUC-3373 + docetaxel

Number of patients

4

Age (median)

67

(range 60-75)

Prior lines of therapy (median)*

2

(range 1-3)

Sex	Male	2 (50%)
	Female	2 (50%)
ECOG PS	0	1 (25%)
	1	3 (75%)
Metastatic sites, n	≤ 3	2 (50%)
	≥ 4	2 (50%)

Middleton *et al* (2024) medRxiv doi: 10.1101/2024.11.07.24316829. Data cut-off: October 8, 2024

*for metastatic disease

Docetaxel toxicities challenging so an alternative taxane may be explored

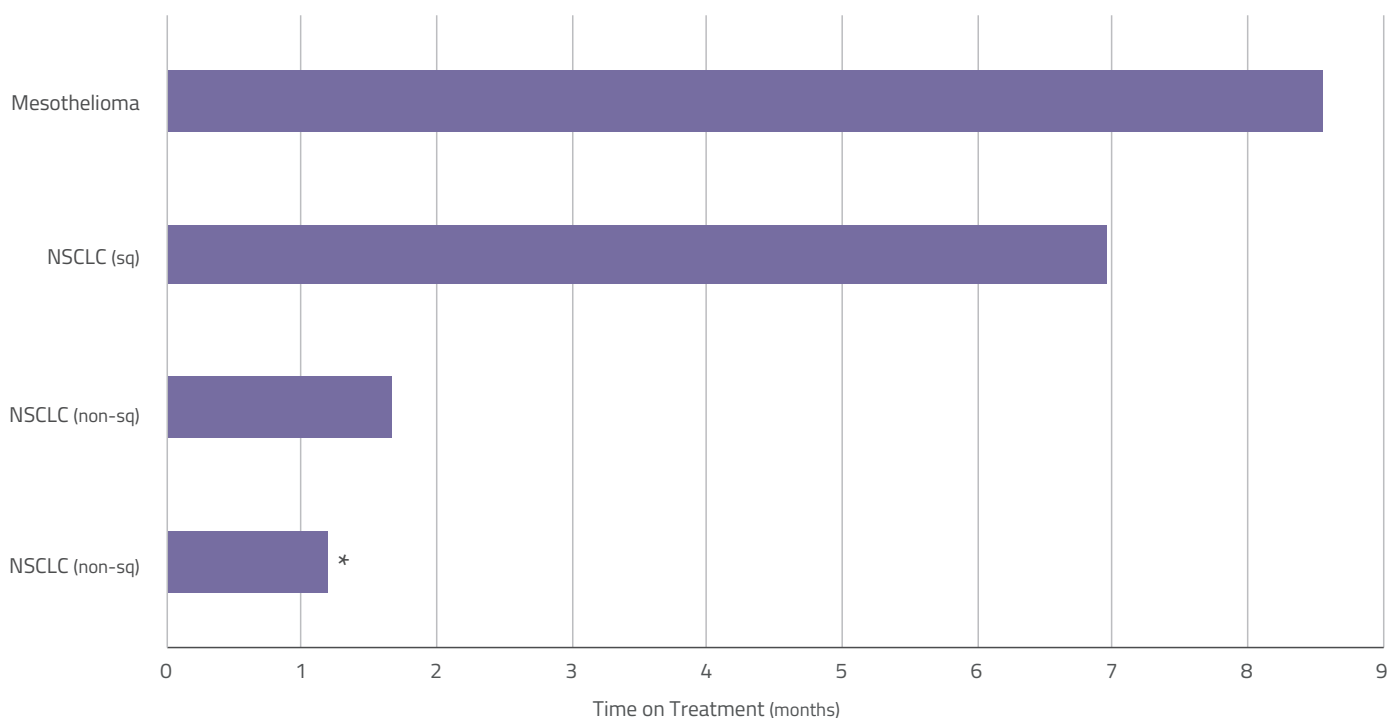
	NUC-3373 + docetaxel (n=4)		
	All Grades, n(%)	Grade 3, n(%)	Grade 4, n(%)
Fatigue	4 (100)	1 (25)	0
Diarrhea	3 (75)	1 (25)	0
Hypotension	2 (50)	1 (25)	0
Stomatitis	2 (50)	0	0

Docetaxel escalation unlikely

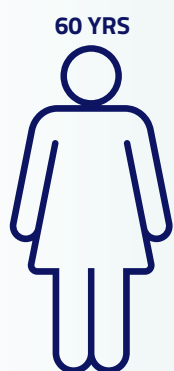
All Grade TRAEs with prevalence ≥ 2 patients related to NUC-3373, docetaxel or both
Additional Grade 3 TRAEs ≤ 2 patients: vomiting (1 pt); No Grade 4 TRAEs

Encouraging time on treatment

- Docetaxel is current standard of care & typically achieves PFS of 3-4 months



Prolonged stable disease in PD-1 inhibitor experienced patients



60 YRS

Pleural Mesothelioma

Prior lines of therapy

- 1) cisplatin + pemetrexed:
progressive disease within 4 months
- 2) nivolumab:
progressive disease within 4 months
- 3) carboplatin + pemetrexed:
progressive disease within 1 month

NUC-3373 750 mg/m² + docetaxel 55 mg/m²

- 4 target lesions (2x lymph node, 2x mediastinum)

Stable Disease: 13+ months (ongoing)

Treatment duration: 8.5 months (discontinued due to fatigue)

- NUC-3373 + docetaxel (4 cycles), followed by NUC-3373 (5 cycles)



77 YRS

NSCLC (squamous)

Prior lines of therapy

- 1) carboplatin + paclitaxel + pembrolizumab:
stable disease for 2 months
- 2) pembrolizumab (maintenance):
progressive disease within 21 months

NUC-3373 750 mg/m² + docetaxel 55 mg/m²

- 1 target lesion (lung)

Stable Disease: 7 months

Treatment duration: 7 months

- NUC-3373 + docetaxel (6 cycles), followed by NUC-3373 (2 cycles)

Key takeaways

NUC-3373 + docetaxel has shown prolonged disease control in PD-1 inhibitor experienced patients

Docetaxel toxicities challenging so an alternative taxane may be explored