



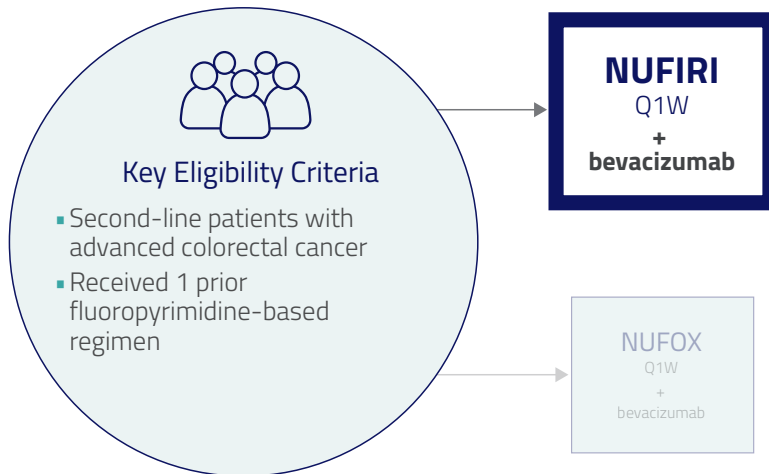
COMPLETED



# NUTIDE:302 - PART 3 / NUFIRI + bevacizumab

COLORECTAL CANCER - PHASE 2 STUDY

Designed to assess NUFIRI in combination with bevacizumab in the second-line setting



### Objectives

- Establish safety of NUFIRI in combination with bevacizumab

### Key endpoints

- Safety & tolerability
- Anti-tumor activity
- PK

### Patient population

- Second-line with 1 prior fluoropyrimidine-based regimen

## NUFIRI + bevacizumab

Number of patients

**8**

Age (median)

**56**

(range 40-81)

Prior chemotherapy regimens (median)\*

**1**

Sex	Male Female	6 (75%) 2 (25%)
ECOG PS	0 1	5 (63%) 3 (38%)
Metastatic sites, n	1-3 ≥4	1 (13%) 7 (88%)
Liver metastases	Yes	4 (50%)
RAS mutated	Yes No	4 (50%) 4 (50%)
Prior bev	Yes	1 (13%)

Khan et al (2023) Mol Cancer Ther; 22: Suppl 12 Abstract ID B048 (AACR NCI EORTC October 2023). Data cut-off: August 22, 2023

\*for metastatic disease

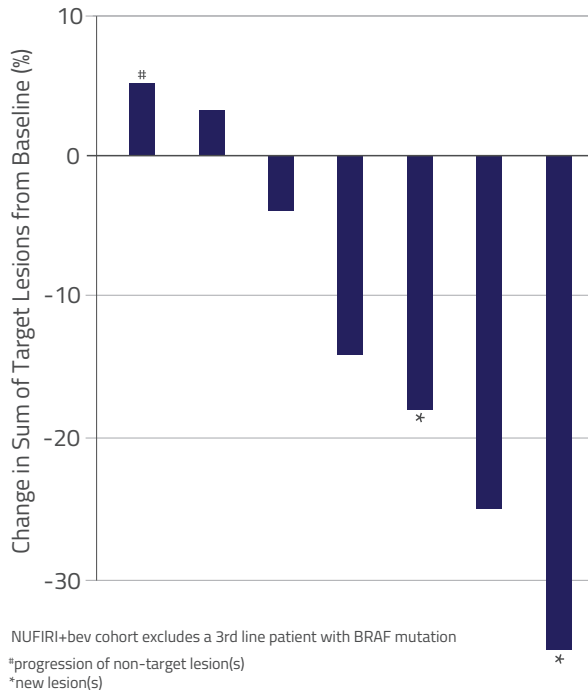
### NUFIRI is well tolerated in combination with bevacizumab

	NUFIRI + bevacizumab (n=8*)		
	All Grades, n(%)	Grade 3, n(%)	Grade 4, n(%)
ALT increased	5 (63%)	2 (25%)	0
AST increased	5 (63%)	0	0
Diarrhea	5 (63%)	0	0
Nausea	4 (50%)	1 (17%)	0
Anemia	3 (38%)	0	0
Fatigue	2 (25%)	0	0
Flushing	2 (25%)	0	0
Vomiting	2 (25%)	1 (17%)	0
Abdominal pain	1 (13%)	0	0
Constipation	1 (13%)	0	0
Decreased appetite	1 (13%)	0	0
Dysguesia	1 (13%)	0	0
Platelet count decreased	1 (13%)	0	0

- No Grade 4 toxicities
- Low rates of Grade 3 toxicities
- Encouraging safety profile compared to FOLFIRI-based regimens
- RP2D: NUC-3373 1500 mg/m<sup>2</sup> + LV 400 mg/m<sup>2</sup> (Q1W) + irinotecan 180 mg/m<sup>2</sup> + bevacizumab 5 mg/kg (Q2W)

All Grade treatment related AEs with an incidence of ≥10% in NUC-3373 +/- combinations. \*Safety data includes a 3rd line patient with BRAF mutation who is not included in efficacy data below  
Khan et al (2023) Mol Cancer Ther; 22: Suppl 12 Abstract ID B048 (AACR NCI EORTC October 2023). Data cut-off: August 22, 2023

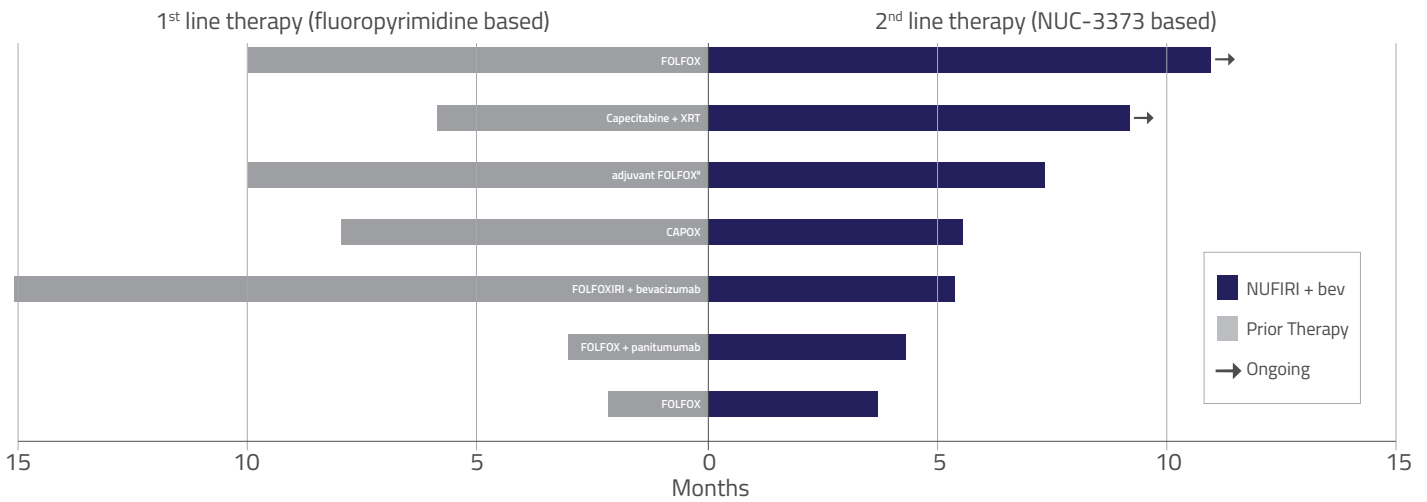
## Encouraging anti-tumor activity in second-line patients



- Tumor shrinkages were observed in 5 out of 7 patients
- Shrinkage of liver metastases (-4%, -25%, -35%) was observed in 3 of these patients

## Numerous second-line patients achieved longer progression-free survival (PFS) compared to their first-line therapy

- PFS typically decreases by 50% with each line of therapy in CRC patients
- Matching or exceeding the PFS achieved in the 1st line is a very encouraging sign of efficacy



NUFIRI+bev cohort excludes a 3<sup>rd</sup> line patient with BRAF mutation  
 Data cut-off August 22, 2023

\*patient relapsed 4 months after completion of adjuvant FOLFOX indicating metastatic disease

### Key takeaways

NUFIRI + bevacizumab has shown prolonged disease control & tumor reductions

NUFIRI + bevacizumab has a favorable safety profile

NUC-3373 can be dosed over 2 hours as part of NUFIRI + bevacizumab regimen