



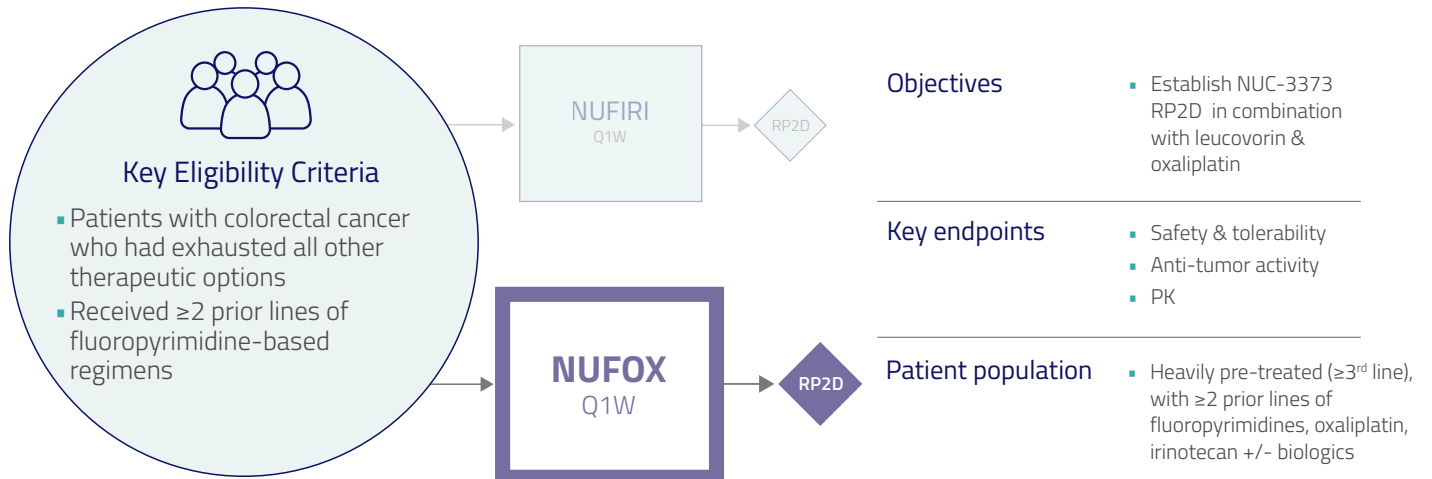
COMPLETE



NUTIDE:302 - PART 2 / NUFOX

COLORECTAL CANCER - PHASE 1b STUDY

Designed to establish the RP2D of NUC-3373 + leucovorin in combination with oxaliplatin



NUFOX

Number of patients

23

Age (median)

61

(range 40-75)

Prior chemotherapy regimens (median)

3

(range 2-8)

Sex	Male Female	11 (48%) 12 (52%)
ECOG PS	0 1	12 (52%) 11 (48%)
Metastatic sites, n	1-3 ≥ 4	14 (61%) 9 (39%)
KRAS mutated	Yes No	16 (70%) 6 (26%)
Prior bev exposure	Yes No	11 (48%) 12 (52%)

Coveler *et al* (2022) Ann Oncol; 33: Suppl 7 Abstract ID 354P (ESMO September 2022). Data cut-off: August 5, 2022

NUC-3373 is well tolerated in combination with leucovorin + oxaliplatin

	NUFOX (n=23)		
	All Grades, n(%)	Grade 3, n(%)	Grade 4, n(%)
Nausea	13 (57%)	2 (9%)	0
Diarrhea	10 (43%)	0	0
Vomiting	10 (43%)	1 (4%)	0
Stomatitis	3 (13%)	0	0
ALT increased	5 (22%)	3 (13%)	0
AST increased	5 (22%)	0	0
Appetite decreased	7 (30%)	0	0
Anemia	6 (26%)	0	0
Fatigue	13 (57%)	2 (9%)	0
Infusion-related reaction	4 (17%)	0	0
Headache	3 (13%)	0	0
Feeling hot	3 (13%)	0	0
Chills	3 (13%)	1 (4%)	0

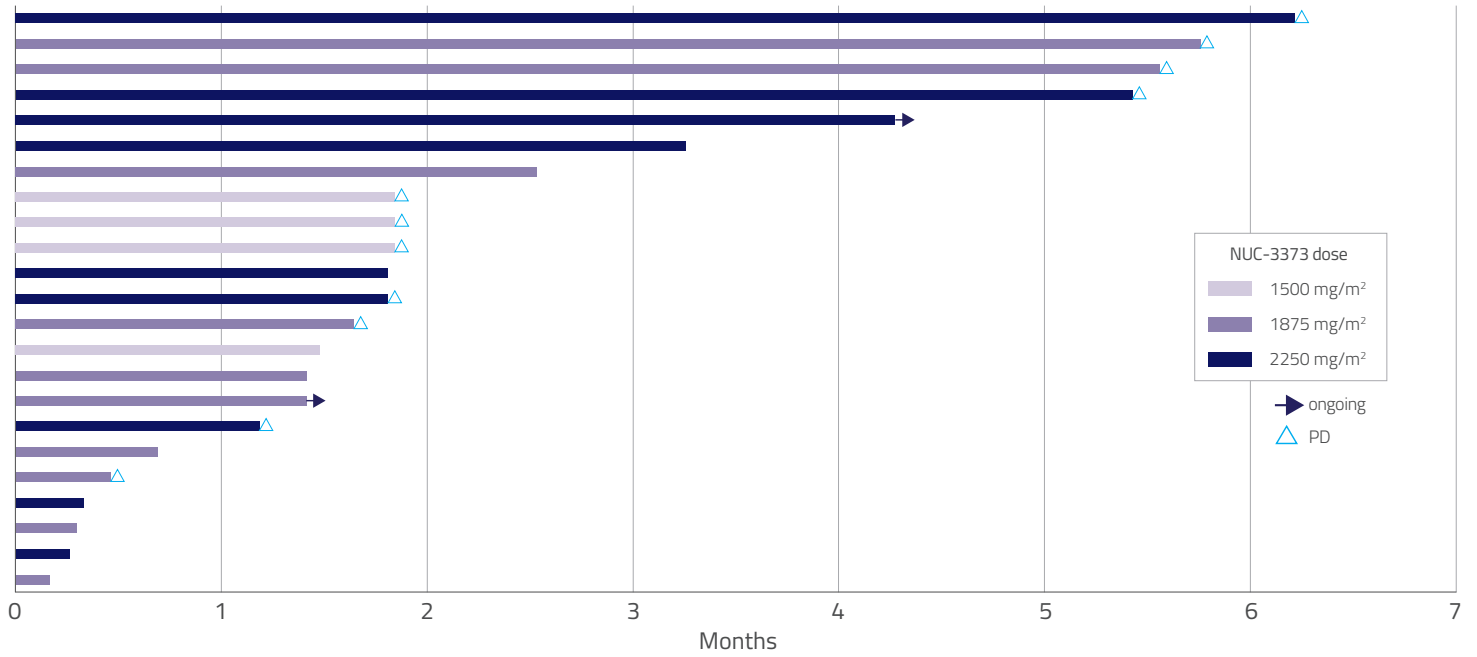
- No Grade 4 toxicities
- Low rates of Grade 3 toxicities
- DLTs in 3 patients
 - Grade 3 fatigue (2 pts at NUC-3373 2250 mg/m² + oxaliplatin 85 mg/m²)
 - Grade 3 ALT increased/Grade 2 bilirubin increased (1 pt at NUC-3373 2250 mg/m² + oxaliplatin 85 mg/m²)
- MTD: NUC-3373 1875 mg/m² + LV 400 mg/m² (Q1W) + oxaliplatin 85 mg/m² (Q2W)

TRAEs reported are related to NUC-3373 or NUC-3373 & oxaliplatin. All Grade TRAEs with incidence $\geq 10\%$.

NUC-3373 PK profile unchanged by oxaliplatin

- Oxaliplatin had no impact on NUC-3373 exposure

Encouraging treatment duration in a heavily pre-treated population



Coveler *et al* (2022) *Ann Oncol*; 33: Suppl 7 Abstract ID 354P (ESMO September 2022). Data cut-off: August 5, 2022

Key takeaways

NUFOX has shown encouraging signs of clinical activity in heavily pre-treated patients

NUFOX has a favorable safety profile compared to FOLFOX historical data

NUFOX RP2D determined:
NUC-3373: 1875 mg/m²
LV: 400 mg/m²
Oxaliplatin: 85 mg/m²